

About Us

Team Plus® design and manufacture an integrated suite of motor-sport sensors, data gateway devices, CANbus accessories and software to capture, monitor, visualize and optimize Tire/Tyre and Brake status.

Target Audience

Anyone with a Race Dash or Race ECU with CAN logging.

Compatible with more than 20 major CAN Dash / Logger brands.

Pricing Strategy

Price positioned to be affordable for mid and entry level motor-sport.

Designed for DIY install to reduce costs of setup.

Club and Pro level options.

Value Proposition



Reduce Lap Times

by temperature optimization



Return on Investment

from extra tire/tyre life



Reduce Costs

Reduce accident damage costs due to cold tires/tyres



Team Plus® Sensor Products

Wheel Turtle®

Tire/Tyre Temperature
Sensor

Club

Temps per tire/tyre: 8
+ Distance
& RGB Color/Colour

Update Rate: 10Hz

Case: HT Nylon

Power Source: Battery
or USB

Sensor Head: Movable

Dimensions: mm
59(L) x 47(W) x 20(H)



Pro

Temps per tire/tyre: 8
+ Distance
& RGB Color/Colour

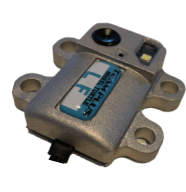
Update Rate: 15Hz

Case: Alloy

Power Source: Hard
Wired 12V

Sensor Head: Fixed

Dimensions: mm
47(L) x 50(W) x 13(H)



TPMS

Track Grade Tire/Tyre
Pressure Sensor

Internal

Resolution: 0.1psi
Update Rate: 10Hz
Output: BLE

Mount: Internal +
Stem and Valve

Battery: NOT
REPLACABLE

Active Batt: ~30 Hrs

Dimensions: mm
76(L) x 50(W) x 22(H)



External

Resolution: 0.1psi
Update Rate: 10Hz
Output: BLE

Mount: External
Screw on to Valve

Battery: CR1632
Active Batt: ~ 18 hrs

Dimensions: mm
21(L) x 21(W) x 17(H)



Brake Turtle™

Brake Temp
Sensor

Pro

Temp Range: 0-1000C
Update Rate: 15Hz
Case: Alloy

Power Source: 12V

Output: BLE

Dependency: Wheel
Turtle Pro required

Dimensions: mm
47(L) x 50(W) x 13(H)



TeleDash® - Android and iOS Apps

Manage device settings

View, record, replay and live share tire/tyre and GPS data.

Live Bluetooth (BLE) data from Wheel Turtle and TPMS

Standards and Compliance



Manufacturing

- **Standards Australia** - meets all applicable mandatory requirements
- Processor, Wi-Fi and Bluetooth boards used in our products hold or are pending approval for **CE**, **RoHS**, and **FCC** certifications. See individual data sheets for details.



Motorsport

- **Motorsport Australia** - Complies with relevant regulations for circuit vehicles-check specific category regulations for allowed sensors, displays, logging and telemetry restrictions.
- **International Motor Sports Association (IMSA)** - check specific category regulations for allowed sensors, displays, logging and telemetry restrictions.



Safety

- Team Plus® products are designated as "For off road use only"
- **Federal motor vehicles safety standards -US.** Team Plus certify that the product meets applicable **FMVSS** Including **FMVSS 138** to cover tire pressure monitoring systems provided any factory TPMS functionality is retained for on road use.

Team Plus® CANBus Accessories

CANGate®

Bluetooth to CAN
Data Gateway

3.5" Gateway

Input: Bluetooth (BLE)
- Wheel Turtle
- TPMS
Output: CAN bus (2.0B)
- 500Kb/s or 1Mb/s
- 10Hz Data Rate
Screen: 3.5" Color/Colour
One Glance Visualisation

Dimensions: mm
114(L) x 82(W) x 18(H)



CANHub

CANbus Wiring
hub

4 Port Hub

Ports: 4 x DTM style 4
pin sockets
Pin order: Any
Construction: Nylon/
ASA
Mount: Horizontal and
Vertical options

Dimensions: mm
100(L) x 20(W) x 47(H)



CANSwitch™

CANbus Controlled
Power Outlets

SWITCH-2

Input: CANbus and 12V
- DTM 4 pin socket
Port Control: CANbus
message port on/off
Output: 2 Modular Ports
- 5V 3A USB-A
- 5V 3A USB-C
- 12V screw terminal
Screen: LED for Device ID
Switching: Twin MOSFET
low side

Dimensions: mm
125(L) x 97(W) x 29.5(H)

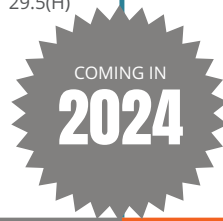
BT-IN

2 Analog Inputs
to Bluetooth

2 Port Input

Input: 2 x 0-5V Analog
sensors
Output: Bluetooth (BLE)
- Team Plus CANGate
compatibility coming
Update Rate: 10Hz
Power Source: 12V

Dimensions: To be advised



Manufacturer Information

- Designed in Australia
- Assembled in Australia with components from Australia, USA, China, Germany, Belgium, Malaysia.
- Firmware and software all developed and supported in Australia
- TPMS made in China based on Australian specification
- 100% Australian family owned business.





Team Plus Pty Ltd
Suite 200, Shop 12
50 Comrie Street
Wanniassa, ACT 2903
AUSTRALIA

ABN: 96 654 840 221

Team Plus® Wheel Turtle® sensor enclosure designs are registered design intellectual Property. All other enclosures copyright protected. --- Team Plus® Wheel Turtle® sensor head board and CANGate® Switch PCB are copyright Intellectual Property. --- Firmware for Team Plus® Wheel Turtle® and Team Plus® CANGate® are copyright intellectual property. --- Team Plus® Teledash phone apps are copyright protected intellectual property. --- "Team Plus", "Wheel Turtle", and "CANGate" are registered trademark intellectual property in Australia, USA, Canada, UK, EU, China and several other markets or pending Trademark filings. "Brake Turtle", "TeleDash" and "CANSwitch" are Trademarks. All rights reserved - Crain Holdings Australia Pty Ltd, Canberra, ACT, Australia - ACN: 640 049 985