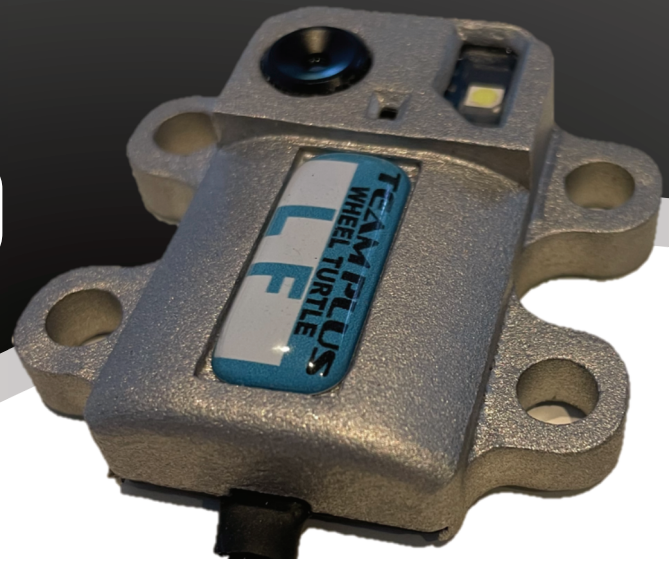




Wheel Turtle® PRO

**Tyre Temperature Sensor
+ Distance & RGB Colour**



Team Plus® WHEEL TURTLE® is an innovative sensor module designed to improve lap times and reduce costs by measuring and reporting live tyre temperatures. WHEEL TURTLE® streams LIVE by Bluetooth to the Team Plus® TELDASH™ smart phone app, RaceChrono smart phone app, OR to your CANbus race dash logger using Team Plus CANGate®.



Infrared Thermal Array

Wheel Turtle® contains a thermal array sensor that consolidated data into 8 temperature bands across each tyre and sends the data at 15Hz.



Phone app configuration

Wheel Turtle® settings are updated using the Team Plus TeleDash™ phone app over Bluetooth.



Distance and Tyre Colour Sensors

Unique to Wheel Turtle® is that it also contains a distance sensor that can represent suspension movement AND a colour sensor that is monitoring the surface colour of the tyre. These extra data points can help determine tyre condition changes.



Rugged Aluminium Body.

Wheel Turtle® PRO has an Aluminium body and fixed sensor head to cope with the harsh environment of a race track. It has extra layers of water sealants and hardwired cable with USB-C connector. Designed to be permanently installed in a race car.

"Team Plus", "CANGate" and "Wheel Turtle" are Registered Trademarks in several countries. "Brake Turtle", "CANHub" and "TeleDash" are reserved Trademarks. All rights reserved by Crain Holdings Australia Pty Ltd, Canberra, Australia.

<https://team-plus.com>

Technical Specifications



Dimensions	L: 47mm W: 50mm H: 13mm	1 7/8" 1 15/16" 1/2"	Processors	ESP32-S3 module Xtensa® dual-core 32-bit LX7
Sensors	16x12 IR Thermal array sensor 0-250 C (32-482F)		Connections	USB-C connection for power Supply and firmware updates. Bluetooth Connection to Team Plus® TeleDash™ app for configuration and data viewing and/or to Team Plus® CANGate® to pass data to CANBus.
	Time of Flight sensor 0-200mm (0-8")			
	RGB Colour Sensor			
Weight	28g .(1oz)		Power Consumption	0.12A @ 5.12V
Firmware	Team Plus® Wheel Turtle® firmware. Updates available at https://team-plus.com/support		Standards and Compliance	RoHS - DZ-508 Board Pending CE RED - DZ-508 Board Pending FCC - - DZ-508 Board Pending
What's in the box	<ul style="list-style-type: none"> • 4 x Wheel Turtle® PRO • EVA protective carry case • 2x 12V-5V DC Adapters • 4x 2m (6ft) USB-C Cable 		Bluetooth & WiFi	802.11 b/g/n 2.4GHz Wi-Fi Bluetooth v5.0 BR/EDR and BLE standards Data updates at 15Hz



Warranty

Our goods come with guarantees that cannot be excluded under the Australian Consumer Law. You are entitled to a replacement or refund for a major failure and compensation for any other reasonably foreseeable loss or damage. You are also entitled to have the goods repaired or replaced if the goods fail to be of acceptable quality and the failure does not amount to a major failure.

Team Plus offers a 10 Year return to Manufacturer Warranty on Wheel Turtle PRO. Team Plus Pty Ltd will repair or replace the failed product. Damage or failures caused by vehicle accidents are not claimable. Customer is responsible for postage costs of the product back to

Team Plus Pty Ltd.
PO Box 200
Erindale Centre, ACT 2903, AUSTRALIA

Team Plus Pty Ltd will pay for postage of repaired item back to the customer.

For Warranty Claims email info@teampus.cloud

"Team Plus", "CANGate" and "Wheel Turtle" are Registered Trademarks in several countries. "Brake Turtle", "CANHub" and "TeleDash" are reserved Trademarks. All rights reserved by Crain Holdings Australia Pty Ltd, Canberra, Australia.

<https://team-plus.com>

