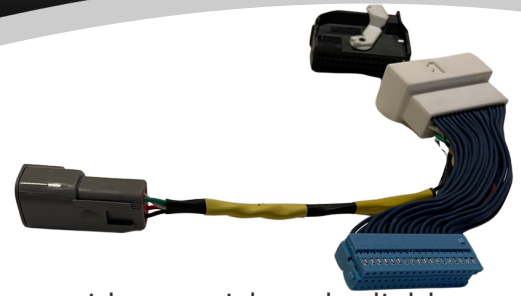


INSTALL GUIDE

BMW F/G Series PT-CAN Plug and Play Adapter



BMW F2x, F3x, F8x,
G8x, G2x, G4x
MINI F5x, F6x
Toyota Supra A9

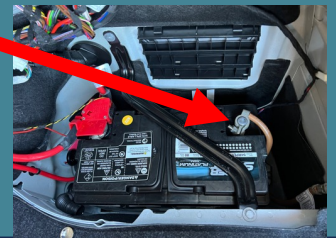


The Team Plus® BMW F/G Series PT-CAN Plug and Play Adapter provides a quick and reliable way to access the BMW ECU CANbus data as well as 12V power and ground wires. Use this adapter to provide power and BMW ECU data your CANbus race dash, logger and/or provide power to additional CANbus accessories such as the Team Plus CANGate.

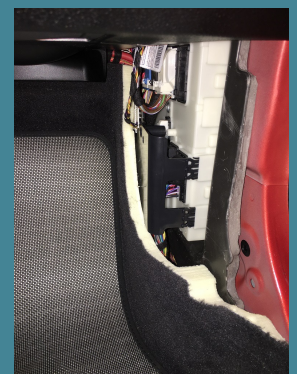
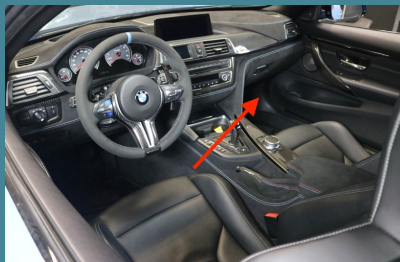
1 Disconnect Battery

Ensure car battery Negative Terminal is disconnected before making any wiring changes to your car. Battery Location for your car is in your owner manual.

Negative
Terminal



2 Locate Front Electronics Module (FEM)



Open up passenger footwell side kick panel to expose the FEM (Front Electronics Module). FEM is located in the passenger side footwell of Left or Right hand drive cars.

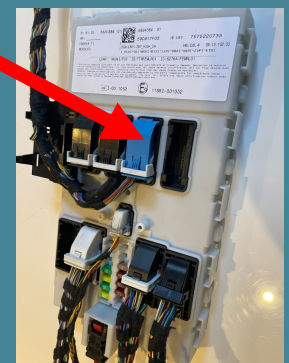
3 Identify Relevant Connector

NOTE: You do not need to remove the FEM from the car. Photos show FEM out of car for clarity.

CON7

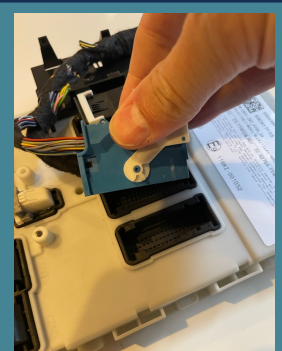
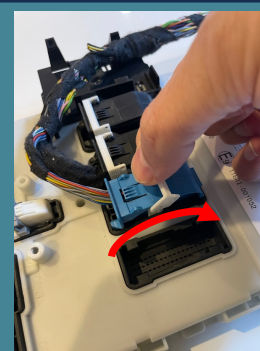
The FEM has 10 connectors, some of which are not used. Colours of plugs in connectors will vary from car to car.

Identify CON7 as per photo. In this photo it is the blue connector, but in many F/G Series cars it is white.



4 Unplug CON7

Unplug CON7 by using the lever on top of the connector, pushing it as per arrow will push connector out of the socket.

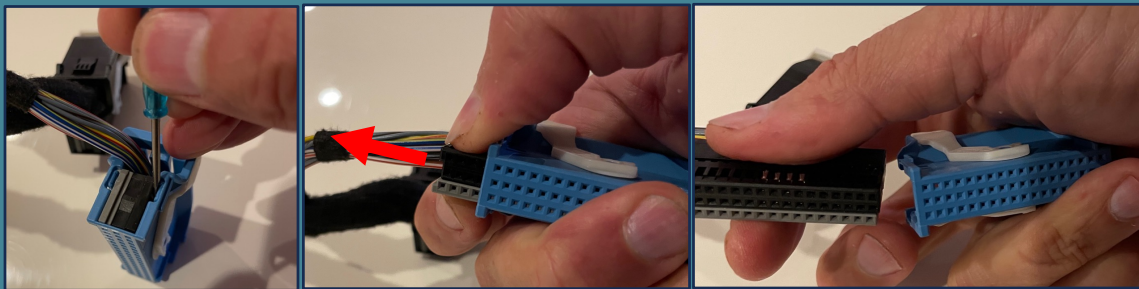


Making changes to car wiring may void car manufacturers warranty and may cause damage to control modules. By installing this adapter, you accept this risk, and that Team Plus is not liable for any damage caused by this adapter.

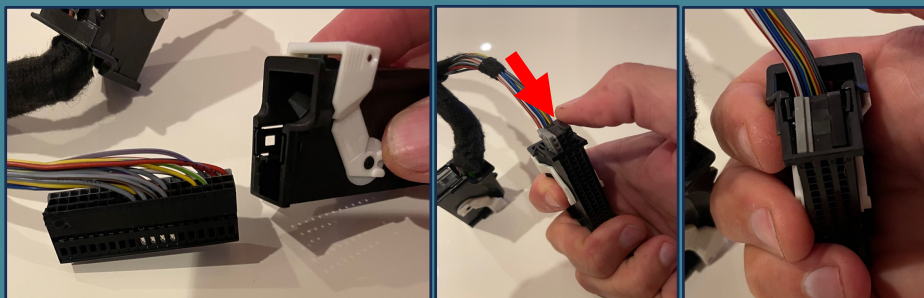
5

Swap Connector Shells

Leverage off the outer shell of connector just removed from CON7



Replace this shell with the black one provided in the adapter kit. Slide it on and ensure it clicks into place.



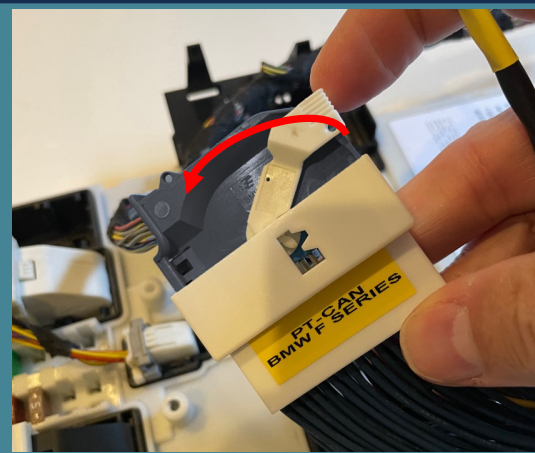
Slide the connector shell you removed from CON7 onto the end of the adapter harness and ensure it clicks into place.



6

Connect Original Cable to Adapter Harness

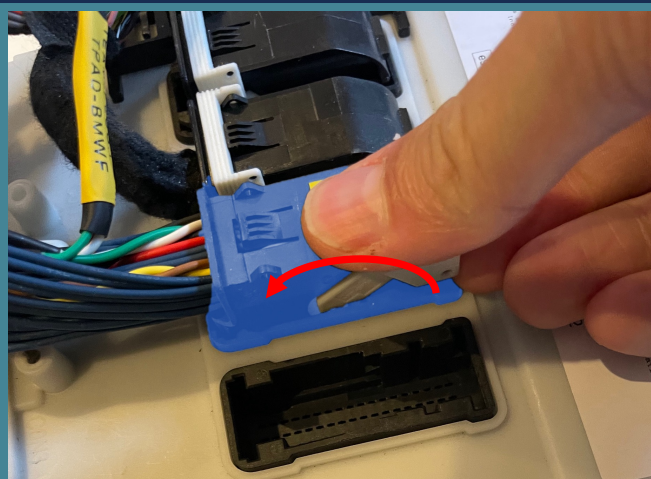
Plug the original CON7 connector with the new outer shell into the white end of the adapter harness. Use lever to secure it into the socket.



7

Plug Adapter into CON7 on FEM

Plug the other end of the adapter harness which now has the original outer shell into CON7 of the FEM. Use the lever to secure it into the socket.



8

Connect Adapter to CANHub or Other CAN Device

DTM Connector



The Adapter has a 4 Pin DTM connector. That will now supply Power (red), GND (black), and the BMW PT-CAN CAN-H (white) and CAN-L (green).

BMW PT-CAN contains the power train data channels providing the key engine, wheels, transmission and ECU data from the car.

Connect a Team Plus DTM4 connector cable and run it to where you are installing Team Plus CANHub

OR

Connect you own DTM4 plug and cable to go to your CAN dash/logger

NOTE: CANBus Speed for BMW PT-CAN is 500 kbit/s



9

Replace Kick Panel

Secure kick panel, carpets and other interior parts back in place over the FEM and Adapter.

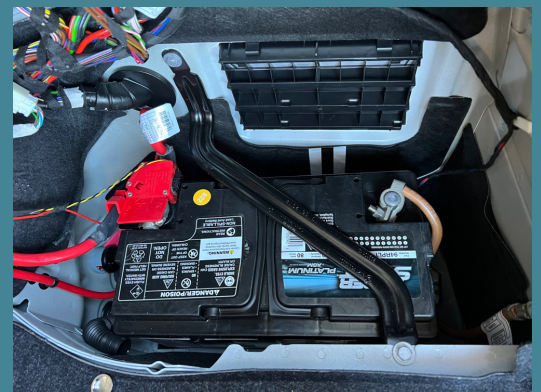


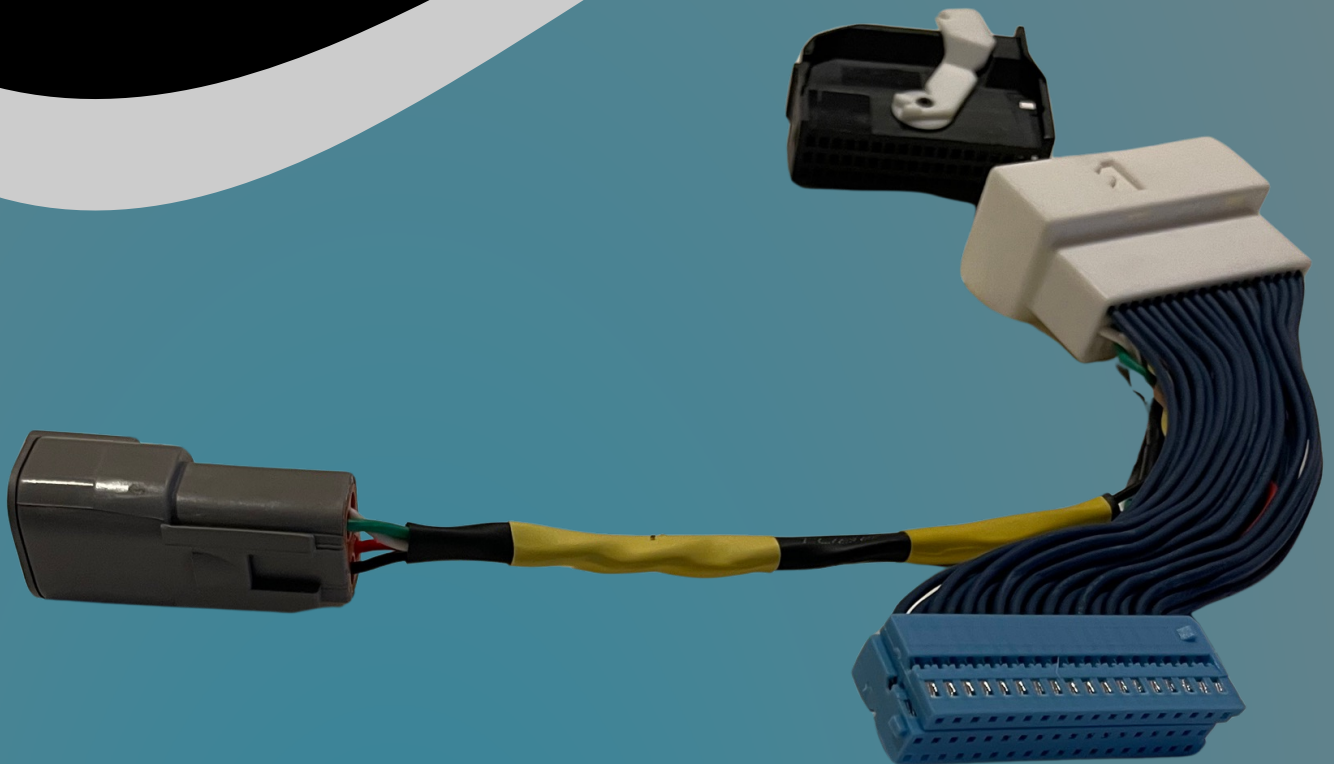
10

Reconnect Battery

Reconnect Negative Battery Terminal and ensure terminal is tight.

Turn on the car and test standard electronics are working correctly.





Team Plus Pty Ltd
Suite 200, Shop 12
50 Comrie Street
Wanniassa, ACT 2903
AUSTRALIA

ABN: 96 654 840 221

<https://team-plus.com>